

# 2521

## 21 PIECES

### WOMEN'S/ WOMEN'S PETITE COSTUME

**Fabrics:** Broadcloth, Poplin, Crepe Back Satin, Satin, Lame. **A,B Bodice** also in Novelty Iridescent Metallic Knit, Synthetic Leather. **A Overskirt** in Novelty Sheers, Metallic Lace, Sequin Knit. **B Peplum Lining** in Novelty Lame. Extra fabric needed to match plaids, stripes or one-way design fabrics.

**Notions:** Thread, one 24" zipper, one hook and eye, one pkg. of ½" wide double fold bias tape, one pkg. of ¼" wide elastic. **B:** Six ½" buttons, one black permanent marking pen for patch stitching, one skein embroidery thread. Look for Simplicity notions and Wrights® trims.

#### BODY MEASUREMENTS (For Sizing Help Visit [www.simplicity.com](http://www.simplicity.com))

|                           |     |     |     |     |     |     |     |     |    |
|---------------------------|-----|-----|-----|-----|-----|-----|-----|-----|----|
| <b>Bust</b>               | 40  | 42  | 44  | 46  | 48  | 50  | 52  | 54  | In |
| <b>Waist</b>              | 33  | 35  | 37  | 39  | 41½ | 44  | 46½ | 49  | "  |
| <b>Hip-9" below waist</b> |     |     |     |     |     |     |     |     |    |
|                           | 42  | 44  | 46  | 48  | 50  | 52  | 54  | 56  | "  |
| <b>Back-neck to waist</b> | 17½ | 17½ | 17½ | 17½ | 17½ | 17½ | 17½ | 18  | "  |
| <b>Pattern Size</b>       | 18W | 20W | 22W | 24W | 26W | 28W | 30W | 32W |    |
| <b>Sizes-European</b>     | 44  | 46  | 48  | 50  | 52  | 54  | 56  | 58  |    |

#### A,B Costume:

|               |    |   |    |    |    |    |    |    |    |
|---------------|----|---|----|----|----|----|----|----|----|
| <b>Bodice</b> |    |   |    |    |    |    |    |    |    |
| 45***         | 1  | 1 | 1  | 1  | 1¼ | 1¼ | 1¼ | 1¼ | Yd |
| 60***         | ¾  | ¾ | ¾  | ¾  | ¾  | ¾  | ¾  | ¾  | "  |
| <b>Skirt</b>  |    |   |    |    |    |    |    |    |    |
| 45***         | 3¾ | 4 | 4¼ | 4¼ | 4¼ | 4¾ | 4¾ | 4¾ | Yd |

**Interfacing-** 2% yd. of 20" to 25" lightweight fusible; **Boning-** 1% yd. of feather weight

**A Front Inset and Sleeve-** 1% yd. of 45\*\*\*

#### Overskirt

|              |    |    |    |    |    |    |    |    |    |
|--------------|----|----|----|----|----|----|----|----|----|
| 45" or 60*** | 2% | 2% | 2½ | 2% | 2% | 2% | 2% | 2% | Yd |
|--------------|----|----|----|----|----|----|----|----|----|

**Ribbon, Cord or Suede Lacing-** 2 yd. of ½" to ¾" wide; **Coin Trim-** 4% yd. of 1½" wide

**B Front Inset and Sleeve-** 1% yd. of 45\*\*\*; **Peplum-** 1 yd. 45" to 60\*\*\* each of fabric and lining; **Patch-** 4" square fabric remnant; **Moon Applique-** 10" square fabric remnant; **Cat Applique-** 9" x 12" piece of felt; **Paper backed fusing web-** ¾ yd. of 15" to 17" wide

#### FINISHED GARMENT MEASUREMENTS (Includes Design and Wearing EASE)

|  |      |      |      |      |      |      |      |      |    |
|--|------|------|------|------|------|------|------|------|----|
| <b>A,B Bust</b>                                | 43½  | 45½  | 47½  | 49½  | 51½  | 53½  | 55½  | 57½  | In |
| <b>Finished back length from back of neck:</b> |      |      |      |      |      |      |      |      |    |
| <b>A,B Dress</b>                               | 52½  | 53   | 53   | 53½  | 53½  | 53½  | 53½  | 53½  | In |
| <b>A,B Dress width</b>                         | 118½ | 120½ | 122½ | 124½ | 126½ | 128½ | 130½ | 132½ | "  |

\*without nap \*\*with nap \*\*\*with or without nap

### COSTUME POUR FEMME/ PETITE COSTUME

**Tissus:** Popeline, Popeline fine, Crêpe de satin, Satin, Lamé. **A,B Corsage** aussi en Jersey fantaisie métallisé iridescent, Cuir synthétique. **A Dessus de jupe** en Tissus transparents, Dentelle métallisée, Jersey de paillettes. **B Doublure du basque** en Lamé fantaisie. Prévoyez davantage de tissu pour raccorder les écosais, rayures ou motifs unidirectionnels.

**Mercurie:** Fil, une glissière de 60cm, une agrafe, un paquet de biais double de 1.3cm de large, un paquet d'élastique de 6mm de large. **B:** Six boutons de 1.3cm, un marqueur à encre noire indélébile pour la pièce à raccommoder, un écheveau de fil à broder. Demandez la mercerie Simplicity et les garnitures de Wrights®.

#### MESURES NORMALISEES

|   |     |     |     |      |     |     |      |     |    |
|---|-----|-----|-----|------|-----|-----|------|-----|----|
| <b>Poitrine</b>                               | 102 | 107 | 112 | 117  | 122 | 127 | 132  | 137 | cm |
| <b>Taille</b>                                 | 84  | 89  | 94  | 99   | 105 | 112 | 118  | 124 | "  |
| <b>Hanches (23cm au-dessous de la taille)</b> |     |     |     |      |     |     |      |     |    |
|   | 107 | 112 | 117 | 122  | 127 | 132 | 137  | 142 | "  |
| <b>Dos (encolure à taille)</b>                | 43  | 44  | 44  | 44.5 | 45  | 45  | 45.5 | 46  | "  |
| <b>Tailles</b>                                | 18W | 20W | 22W | 24W  | 26W | 28W | 30W  | 32W |    |
| <b>Tailles-Françaises</b>                     | 46  | 48  | 50  | 52   | 54  | 56  | 58   | 60  |    |

#### A,B Costume:

|                |      |      |      |      |      |      |      |      |   |
|----------------|------|------|------|------|------|------|------|------|---|
| <b>Corsage</b> |      |      |      |      |      |      |      |      |   |
| 115cm**        | 0.90 | 0.90 | 0.90 | 0.90 | 1.10 | 1.10 | 1.20 | 1.20 | m |
| 150cm**        | 0.60 | 0.60 | 0.60 | 0.70 | 0.70 | 0.70 | 0.80 | 0.80 | " |
| <b>Jupe</b>    |      |      |      |      |      |      |      |      |   |
| 115cm **       | 3.50 | 3.70 | 3.80 | 3.80 | 3.90 | 4.00 | 4.00 | 4.00 | m |

**Entoilage-** 2.20m de 51cm à 64cm léger, thermocollant; **Baleine** - 1.00m très légère.

**A Incrustation et manche devant-** 1.70m de 115cm\*\*

#### Dessus de jupe

|                  |      |      |      |      |      |      |      |      |   |
|------------------|------|------|------|------|------|------|------|------|---|
| 115cm ou 150cm** | 2.20 | 2.20 | 2.30 | 2.40 | 2.40 | 2.50 | 2.50 | 2.50 | m |
|------------------|------|------|------|------|------|------|------|------|---|

**Ruban, Cordelette ou Lacet suédé-** 1.80m de 3mm à 6mm de large; **Garniture du coin-** 4.40m de 3.8cm de large

**B Incrustation et manche devant-** 1.30m de 115cm\*\*; **Basque-** 0.90m de 115cm à 150cm\*\* de chaque tissu et doublure; **Pièce à raccommoder-** un carré de tissu de 10cm; **Application de lune-** un carré de tissu de 25.5cm; **Application de chat-** un morceau de feutrine de 23cm x 30.5cm; **Matière thermocollante avec support de papier-** 0.60m de 38cm à 43cm de large

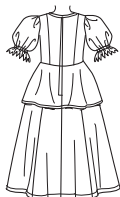
#### MESURES DES VETEMENTS FINI

|   |     |     |     |     |     |     |     |     |    |
|---|-----|-----|-----|-----|-----|-----|-----|-----|----|
| <b>A,B Poitrine</b>                                 | 111 | 116 | 121 | 126 | 131 | 136 | 141 | 146 | cm |
| <b>Longueur finie du dos depuis la base du cou:</b> |     |     |     |     |     |     |     |     |    |
| <b>A,B Robe</b>                                     | 134 | 135 | 135 | 135 | 135 | 136 | 136 | 137 | cm |
| <b>A,B Largeur de robe</b>                          | 301 | 306 | 311 | 316 | 321 | 326 | 331 | 32  |    |

\*sans sens \*\*avec sens \*\*\*avec ou sans sens



A



B