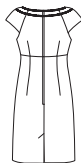


16 PIECES/PIEZAS

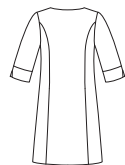
Métrages et instructions de couture en Français à l'intérieur de l'enveloppe.



A C



B



D



E

MISSES' SEVEN SIZES IN ONE

Sizes	10	12	14	16	18	20	22		
European Size	36	38	40	42	44	46	48		
Bust	32½	34	36	38	40	42	44	In	"
Waist	25	26½	28	30	32	34	37	"	"
Hips	34½	36	38	40	42	44	46	"	"
Back-neck to waist	16	16¼	16½	16¾	17	17¼	17½	"	"

A,B

45***	1%	1%	1%	1%	1%	1%	2	Yd	"
60***	1%	1%	1%	1%	1%	1%	1½	"	"

C

45***	¾	¾	¾	¾	¾	¾	¾	Yd	"
60***	¾	¾	¾	¾	¾	¾	¾	"	"

Contrast Skirt

45***	1%	1%	1%	1%	1%	1%	1%	Yd	"
60***	¾	¾	¾	¾	¾	¾	1	"	"

A,B,C Lining

45**	¾	¾	¾	¾	¾	¾	¾	Yd	"
------	---	---	---	---	---	---	---	----	---

D

45***	3%	3%	3%	3%	3%	3%	3%	Yd	"
60***	2½	2½	2½	2½	2½	2½	2½	"	"

Interfacing 1½ yd. of 20" to 25" lightweight fusible

E

45***	2%	2%	2%	2%	2%	2%	2½	Yd	"
60***	1½	1½	1½	1½	1½	1½	1½	"	"

Interfacing 2½ yd. of 20" to 25" lightweight fusible

GARMENT MEASUREMENTS

A,B,C Bust	35½	37	39	41	43	45	47	In	"
Finished back length from base of neck:									
A,B,C,D	38	38¼	38½	38¾	39	39¼	39½	In	"
A,B,C Width	40	41½	43½	45½	47½	49½	51½	"	"

SUGGESTED FABRICS

Cotton and Cotton Blends, Lightweight Denim, Damask, Pique, Sateen, Silks and Silk Types, Jacquards, Laundered Silks-Rayons, Silk Linen, Shantung, Taffeta, Linen and Linen Blends. Allow extra fabric for matching plaids or stripes.

REQUIREMENTS

A,B,C: One 20" zipper, hook and eye. A: 1½ yd. of ¾" wide ribbon (opt.).
B: 2½ yd. of ¼" wide novelty braid and five jewels (opt.). D: Hook and eye (opt.).
E: ¾ yd. of ¾" wide ribbon (opt.).

*without nap **with nap ***with or without nap

JEUNE FEMME: PATRON SEPT TAILLES SEÑORITAS: PATRON SIETE TALLAS

Tailles / Tallas	10	12	14	16	18	20	22		
Tailles Françaises	38	40	42	44	46	48	50		
Tallas Europeas	36	38	40	42	44	46	48		
Poitrine / Busto	83	87	92	97	102	107	112	cm	"
Taille / Cintura	64	67	71	76	81	89	94	"	"
Hanches / Caderas	88	92	97	102	107	112	117	"	"
Dos (encolure à Taille) / Espalda (escote a cintura)	40.5	41.5	42	42.5	43	44	44	cm	"

A,B

115cm**	1.50	1.50	1.70	1.70	1.70	1.80	m	"
150cm**	1.30	1.30	1.30	1.30	1.30	1.40	"	"

C

115cm**	0.60	0.60	0.70	0.70	0.70	0.70	m	"
150cm**	0.50	0.50	0.60	0.60	0.60	0.60	"	"

Jupe Contrastante / Falda Contrastante

115cm**	1.50	1.50	1.50	1.50	1.50	1.50	m	"
150cm**	0.80	0.80	0.80	0.80	0.80	1.00	"	"

A,B,C Doublure / A,B,C Forro

115cm*	0.70	0.70	0.70	0.70	0.70	0.70	m	"
--------	------	------	------	------	------	------	---	---

D

115cm**	3.20	3.30	3.30	3.30	3.30	3.40	3.40	m	"
150cm**	2.30	2.30	2.30	2.30	2.30	2.40	2.40	"	"

Entoilage 1.70m de 51cm à 64cm, léger,thermocollant

Entretela 1.70m de 51cm à 64cm, ligera, adhesiva.

E

115cm**	2.00	2.00	2.10	2.10	2.10	2.20	2.20	m	"
150cm**	1.60	1.60	1.60	1.60	1.60	1.70	1.70	"	"

Entoilage 1.90m de 51cm à 64cm, léger,thermocollant

Entretela 1.90m de 51cm à 64cm, ligera, adhesiva.

TISSUS SUGGÉRÉS: Coton et Cottonnades, Denim léger, Damas, Piqué, Satinette, Soies et Tissus soyeux. Soie damassée, Soies/Rayonnes prélavées, Mélange Soie et Lin, Shantung, Taffetas, Lin et Mélanges de Lin. Prévoyez davantage de tissu pour raccorder les écossais ou les rayures.

MERCERIE

A,B,C: Une glissière de 50cm, une agrafe. A: 1.50m de ruban de 1.5cm de large (facult.).
B: 2.50m de soutache fantaisie de 6mm de large et cinq bijoux (facult.). D: une agrafe (facult.).
E: 0.60m de ruban de 1.5cm de large (facult.).

TELAS SUGERIDAS

Algodón y Mezclas de Algodones, Drill ligero, Damasco, Piqué, Satén de Algodón, Sedas y Telas sedosas, Seda adamascada, Sedas/Rayones lavados, Mezclas de Seda y Lino, Shantung, Tafetán, Lino y Mezclas de Lino. Se necesita tela extra para casar cuadros o rayas.

MERCERIA: A,B,C: Un cremallera de 50cm, un corchete. A: 1.50m de cinta de 1.5cm de ancho (opcional). B: 2.50m de galón de fantasía de 6mm de ancho y cinco joyerías (opcional). D: un corchete (opcional). E: 0.60m de cinta de 1.5cm de ancho (opcional).

*sans sens **avec sens ***avec ou sans sens

*sin pelusa **con pelusa ***con o sin pelusa

6934
SIZE A 10-22
FR. 38-50
EUR. 36-48

