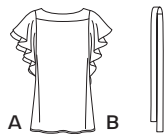


# 11 PIECES/PIEZAS

Métrages et instructions de couture en Français à l'intérieur de l'enveloppe.



C



D



E

## MISSES' SIX SIZES IN ONE

|                    |     |     |     |     |     |    |    |
|--------------------|-----|-----|-----|-----|-----|----|----|
| Sizes              | 8   | 10  | 12  | 14  | 16  | 18 |    |
| European Size      | 34  | 36  | 38  | 40  | 42  | 44 |    |
| Bust               | 31½ | 32½ | 34  | 36  | 38  | 40 | In |
| Waist              | 24  | 25  | 26½ | 28  | 30  | 32 | "  |
| Hip                | 33½ | 34½ | 36  | 38  | 40  | 42 | "  |
| Back-neck to waist | 15½ | 16  | 16½ | 16½ | 16½ | 17 | "  |

### A

|       |    |    |    |    |    |    |    |
|-------|----|----|----|----|----|----|----|
| 45*** | 3% | 3% | 3% | 3% | 3% | 3% | Yd |
| 60*** | 2% | 2% | 2½ | 2½ | 2½ | 2½ | "  |

### B

|       |    |    |    |    |    |    |    |
|-------|----|----|----|----|----|----|----|
| 45*** | 2% | 2% | 2% | 2½ | 2½ | 2½ | Yd |
| 60*** | 1% | 1% | 1% | 1% | 1% | 1% | "  |

Contrast 1¼ yd. of 45" or 60\*\*\*

### C

|       |    |    |    |    |    |    |    |
|-------|----|----|----|----|----|----|----|
| 45*** | 1½ | 1½ | 1½ | 1½ | 1½ | 1½ | Yd |
| 60*** | 1% | 1% | 1% | 1% | 1% | 1% | "  |

### D

|       |    |    |    |    |    |    |    |
|-------|----|----|----|----|----|----|----|
| 45*** | 2% | 2% | 2% | 2% | 2% | 2% | Yd |
| 60*** | 1% | 1½ | 1½ | 1% | 1% | 1% | "  |

### E

|       |    |    |    |    |    |    |    |
|-------|----|----|----|----|----|----|----|
| 45*** | 2% | 2% | 2% | 2% | 2% | 2% | Yd |
| 60*** | 1½ | 1½ | 1½ | 1½ | 1½ | 1% | "  |

All Views Interfacing ½ yd. of 20" to 25" lightweight fusible

## GARMENT MEASUREMENTS

|                |     |     |    |    |    |    |    |
|----------------|-----|-----|----|----|----|----|----|
| All Views Bust | 38½ | 39½ | 41 | 43 | 45 | 47 | In |
|----------------|-----|-----|----|----|----|----|----|

## SUGGESTED FABRICS

Laundered Cottons, Batiks, Silks and Silk Types, Charmeuse, Crepe, Voile, Georgette, Double Georgette, Jerseys, Matte Jerseys.  
Allow extra fabric for matching plaids or stripes.

## REQUIREMENTS

C: One pkg. of ½" wide single fold bias tape. E: 3½ yd. of 1½" wide lace.

\*without nap \*\*with nap \*\*\*with or without nap

## JEUNE FEMME: PATRON SIX TAILLES SEÑORITAS: PATRÓN SEIS TALLAS

|  |    |      |      |    |      |     |    |
|--|----|------|------|----|------|-----|----|
| Tailles / Tallas                                     | 8  | 10   | 12   | 14 | 16   | 18  |    |
| Tailles Françaises                                   | 36 | 38   | 40   | 42 | 44   | 46  |    |
| Tallas Europeas                                      | 34 | 36   | 38   | 40 | 42   | 44  |    |
| Poitrine / Busto                                     | 80 | 83   | 87   | 92 | 97   | 102 | cm |
| Taille / Cintura                                     | 61 | 64   | 67   | 71 | 76   | 81  | "  |
| Hanches / Caderas                                    | 85 | 88   | 92   | 97 | 102  | 107 | "  |
| Dos (encolure à Taille) / Espalda (escote a cintura) | 40 | 40.5 | 41.5 | 42 | 42.5 | 43  | cm |

### A

|         |      |      |      |      |      |      |   |
|---------|------|------|------|------|------|------|---|
| 115cm** | 3.10 | 3.20 | 3.20 | 3.20 | 3.20 | 3.30 | m |
| 150cm** | 2.20 | 2.20 | 2.20 | 2.20 | 2.30 | 2.30 | " |

### B

|         |      |      |      |      |      |      |   |
|---------|------|------|------|------|------|------|---|
| 115cm** | 2.10 | 2.10 | 2.20 | 2.30 | 2.30 | 2.30 | m |
| 150cm** | 1.50 | 1.50 | 1.50 | 1.60 | 1.60 | 1.60 | " |

Parties Contrastantes 1.10m de 115cm ou 150cm\*\*

Partes Contrastantes 1.10m de 115cm o 150cm\*\*

### C

|         |      |      |      |      |      |      |   |
|---------|------|------|------|------|------|------|---|
| 115cm** | 1.30 | 1.30 | 1.30 | 1.30 | 1.30 | 1.40 | m |
| 150cm** | 1.00 | 1.00 | 1.00 | 1.10 | 1.10 | 1.10 | " |

### D

|         |      |      |      |      |      |      |   |
|---------|------|------|------|------|------|------|---|
| 115cm** | 2.00 | 2.00 | 2.00 | 2.10 | 2.10 | 2.10 | m |
| 150cm** | 1.40 | 1.40 | 1.40 | 1.40 | 1.40 | 1.50 | " |

### E

|         |      |      |      |      |      |      |   |
|---------|------|------|------|------|------|------|---|
| 115cm** | 1.90 | 1.90 | 1.90 | 1.90 | 2.00 | 2.00 | m |
| 150cm** | 1.40 | 1.40 | 1.40 | 1.40 | 1.40 | 1.40 | " |

Toutes les Vues Entoilage 0.50m de 51cm à 64cm, léger, thermocollant

Todos los Modelos Entretela 0.50m de 51cm a 64cm, ligera, adhesiva

## TISSUS SUGGÉRÉS

Cotons prélavés, Batiks, Soies et Tissus soyeux, Charmeuse, Crêpe, Voile, Crêpe Georgette, Crêpe Georgette Double, Jerseys fins, Jerseys Mats.  
Prévoyez davantage de tissu pour raccorder les écossais ou les rayures.

## MERCERIE

C: un paquet de ruban de biais simple de 1.3cm de large.

E: 2.80m de dentelle de 3.8cm de large.

## TELAS SUGERIDAS

Algodones lavados, Batiks, Sedas y Telas sedosas, Charmeuse, Crepé, Velo, Crepé Georgette, Crepé Georgette Doble, Mallas finas, Mallas Mates.  
Se necesita tela extra para casar cuadros o rayas.

## MERCERÍA

C: un paquete de cinta de biés sencillo de 1.3cm de ancho.

E: 2.80m de encaje de 3.8cm de ancho.

\*sans sens \*\*avec sens \*\*\*avec ou sans sens

\*sin pelusa \*\*con pelusa \*\*\*con o sin pelusa

6939

SIZE A 8-18

FR. 36-46

EUR. 34-44

